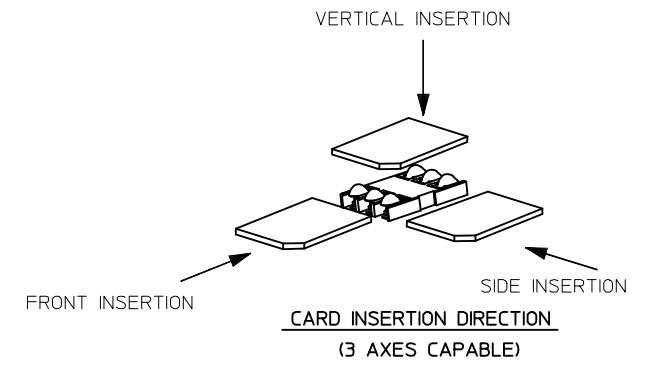
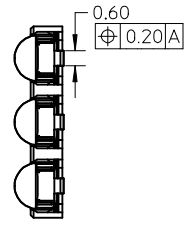
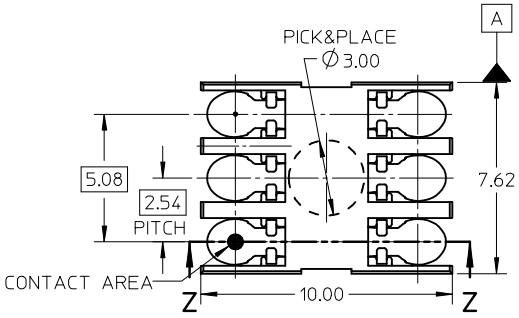
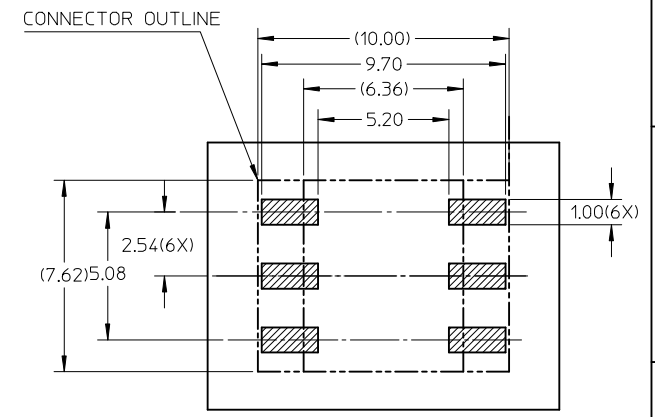
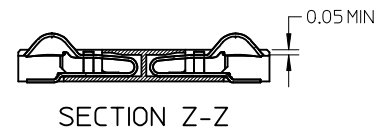
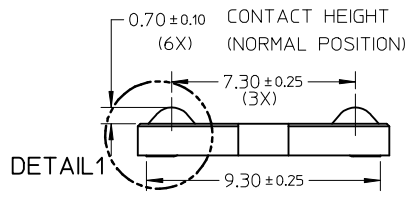


10 9 8 7 6 5 4 3 2 1

F

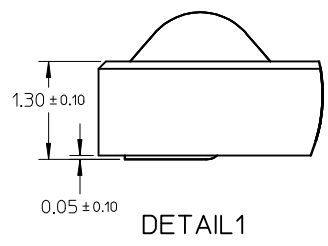


E



D

C



RECOMMENDED PCB LAYOUT (TOLERANCE ±0.05)

B

NOTES:

- 1.MATERIAL  
HOUSING:LCP 30% GLASS FILLED,UL94 V-0,BLACK  
TERMINAL:PHOSPHOR BRONZE 0.12MM THICKNESS
- 2.PLATING  
CONTACT AREA--0.5 MICROMETER MIN GOLD  
SOLDER TAIL--GOLD FLASH  
UNDERPLATING--2 MICROMETER NICKEL OVERALL
- 3.PRODUCT COMPLIANT TO ROHS DIRECTIVE 2002/95/EC  
AND ELV DIRECTIVE 2000/53/EC

NEW RELEASE	EC NO: 2008/10/16	DRWN:YPMU CHKD:YLZHU02	APPR:	DESCRIPTION	QUALITY SYMBOLS	GENERAL TOLERANCES (UNLESS SPECIFIED)		DIMENSION STYLE	SCALE	DESIGN UNITS	THIRD ANGLE PROJECTION
					▼=0 ▽=0	mm	INCH	MM ONLY	5:1	METRIC	
						4 PLACES ± --- ± ---	DRAWN BY	DATE	TITLE		
						3 PLACES ± --- ± ---	LHSHEN	2006/10/10	1.3 HEIGHT BLOCK SIM CONNECTOR SALES DRAWING		
	2 PLACES ± 0.10 ± ---	CHECKED BY	DATE								
	1 PLACE ± 0.20 ± ---	XUXIANG	2006/10/15	MOLEX INCORPORATED							
	ANGULAR ± 2°	APPROVED BY	DATE								
		JENNY	2006/10/15	MATERIAL NO.	DOCUMENT NO.	SHEET NO.					
				473121001	SD-47312-101	1 OF 1					
				DRAFT WHERE APPLICABLE MUST REMAIN WITHIN DIMENSIONS			THIS DRAWING CONTAINS INFORMATION THAT IS PROPRIETARY TO MOLEX INCORPORATED AND SHOULD NOT BE USED WITHOUT WRITTEN PERMISSION				

A

9 8 7 6 5 4 3 2 1