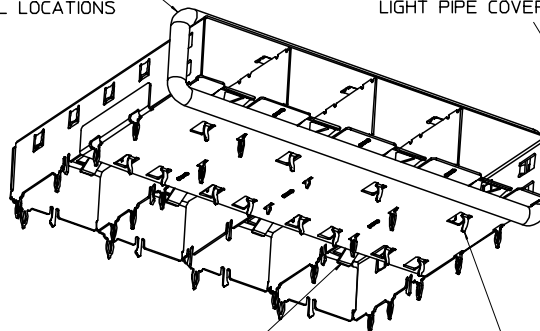


360° ELASTOMER GASKET COMPLIES WITH (SFP) MSA BOARD AND BEZEL LOCATIONS

HOOKS USED WITH OPTIONAL LIGHT PIPE COVER ASSEMBLY

INNER WALL TABS ARE COINED OVER BASE AND COVER FOR RIGIDITY

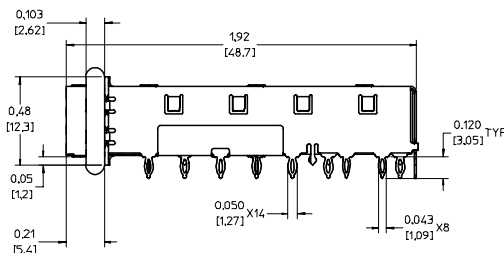
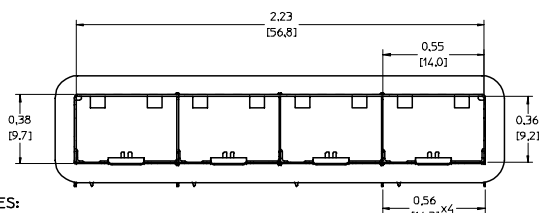


EMI FINGERS CONTACT ADAPTER

12 UNDER BELLY EMI PINS

3

DIMENSIONS OF EACH INNER CAGE DESIGNED TO FUNCTION WITH SMALL FORM-FACTOR PLUGGABLE (SFP) TRANSCEIVER



NOTES:

1. PRESS FIT LEGS 0.120" LONG-
0.062 [1.57] MINIMUM PCB THICKNESS FOR SINGLE SIDED USE.
0.118 [3.00] MINIMUM PCB THICKNESS FOR BELLY TO BELLY USE.

2. MATERIAL: COPPER ALLOY
PLATING: NONE

NOTE: A PRE-PLATED NICKEL VERSION IS AVAILABLE.
REFER TO DOCUMENT SD-74728-420

3. REFERENCE DOCUMENTS:
PRODUCT SPECIFICATION: PS-74728-000
COSMETIC SPECIFICATIONS: WI-HP-7-2774 AND WI-HPA-7-0093
TEST SUMMARY: TS-74728-0415

4. MATES WITH SERIES 74728, LIGHT PIPE COVER ASSEMBLY.

5. THIS PART MEETS THE RESTRICTION OF HAZARDOUS SUBSTANCES IN ELECTRICAL AND ELECTRONIC EQUIPMENT (ROHS) DIRECTIVE (2002/95/EC).

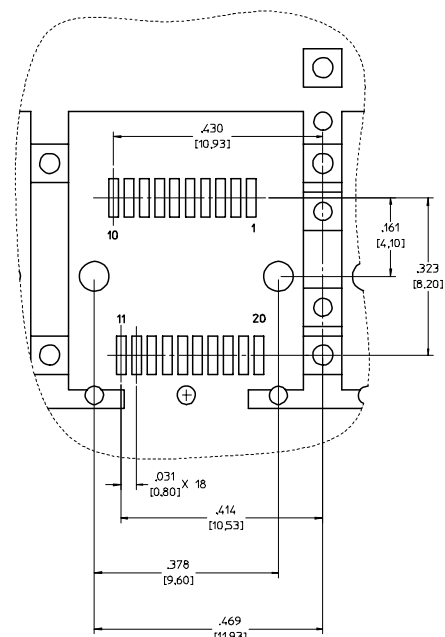
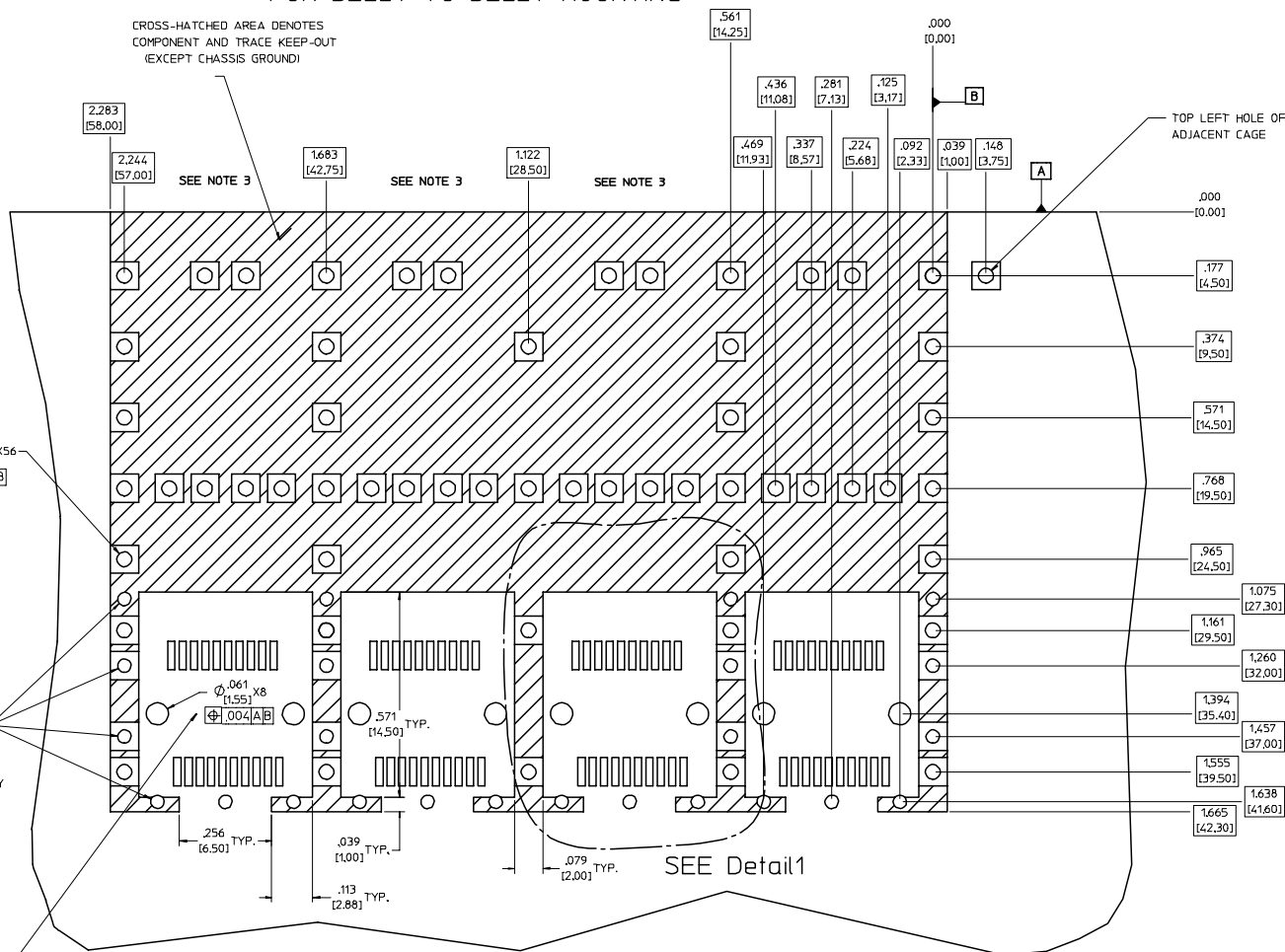
EC NO: USY2006-0225 DRW:KSIMONSON006/01/24 CHKD:BRUSSELL2006/01/24 APPR:BRUSSELL2006/01/25 REV DESCRIPTION	QUALITY SYMBOLS	GENERAL TOLERANCES (UNLESS SPECIFIED)	SCALE 3:1	DESIGN UNITS METRIC	THIRD ANGLE PROJECTION	REVISE ON CAD ONLY
	4 PLACES ± --- ± ---	mm INCH	DIMENSION STYLE IN/MM		TITLE	
	3 PLACES ± --- ± .005		DRAWN BY DATE		1X4 SFP GANGED CAGE ASSY, W/ 0.103 GASKET PRESS FIT, F/ LIGHT PIPE	
	2 PLACES ± 0.13 ± .01		KSIMONSON 2004/10/09		MOLEX INCORPORATED	
1 PLACE ± 0.25 ± ---		ANGULAR ± 1°		MATERIAL NO. DOCUMENT NO. SHEET NO.		
DRAFT WHERE APPLICABLE MUST REMAIN WITHIN DIMENSIONS		APPROVED BY DATE		747280415 SD-74728-415 1 OF 5		
THIS DRAWING CONTAINS INFORMATION THAT IS PROPRIETARY TO MOLEX INCORPORATED AND SHOULD NOT BE USED WITHOUT WRITTEN PERMISSION						

20 19 18 17 16 15 14 13 12 11 10 9 8 7 6 5 4 3 2 1

PCB LAYOUT FOR BELLY TO BELLY MOUNTING

CROSS-HATCHED AREA DENOTES
COMPONENT AND TRACE KEEP-OUT
(EXCEPT CHASSIS GROUND)

HOST CONNECTOR DETAIL



Detail1
SCALE 8:1

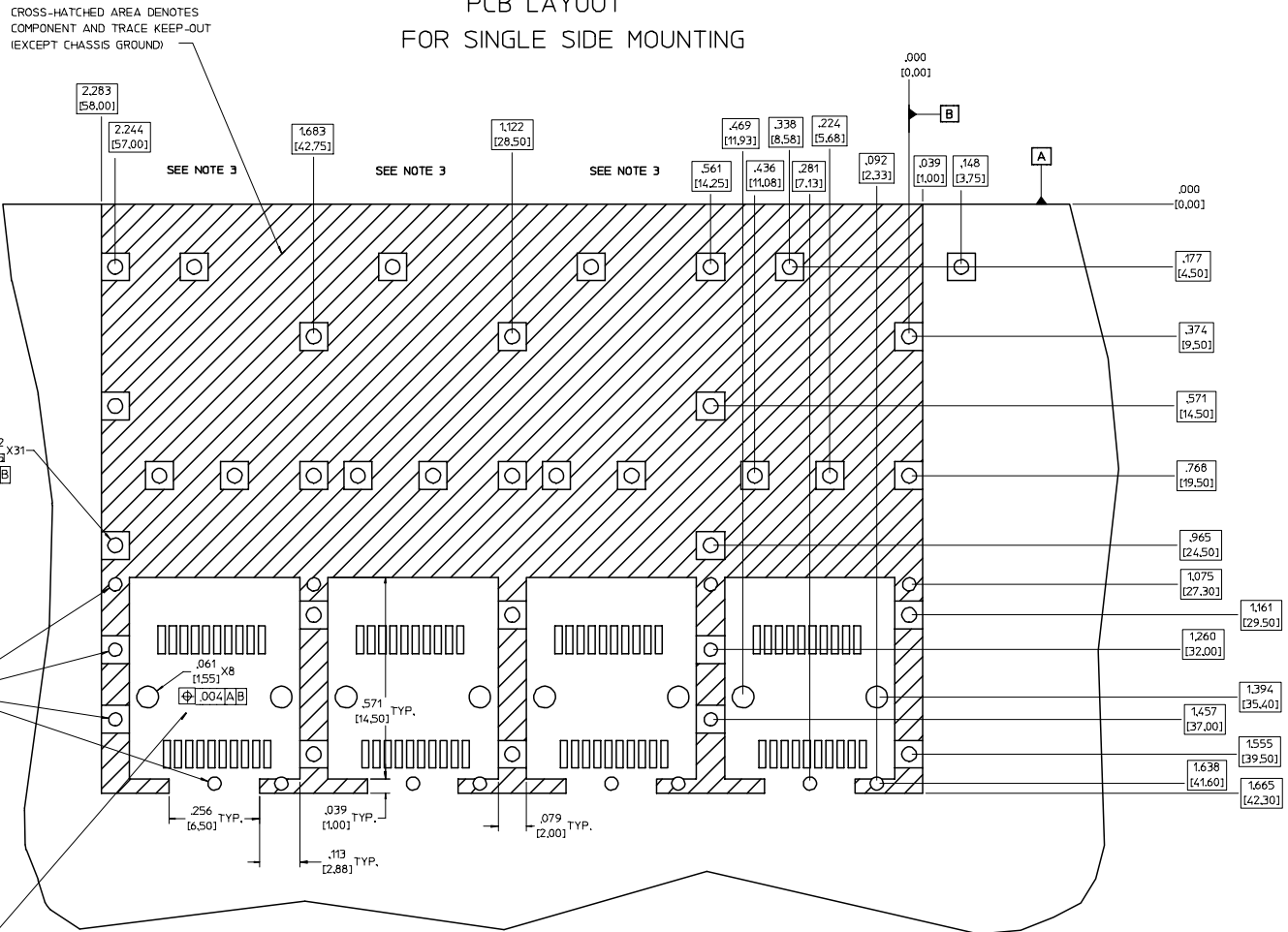
THIS AREA DENOTES
COMPONENT KEEP-OUT
(TRACES ALLOWED)

- NOTES:**
- PADS AND VIAS GO TO CHASSIS GROUND. (64 PLACES). RECOMMENDED PADS TO BE 2mm SQUARE
 - PLATING OPTIONAL FOR THROUGH HOLES. (16 PLACES).
 - RECOMMENDED PLATING INCLUDES HASL, IMMERSION (GOLD, SILVER, OR TIN), AND OSP.
 - HOLE PATTERN REPEATS FOR EACH PORT. SPACING BETWEEN PORTS IS 5.61 [14.25]

EC NO: USY2006-0225 DRW:KSIMONSON006/01/24 CHK:D.BRUSSELL2006/01/24 APPR:R.BRUSSELL2006/01/25 REV DESCRIPTION	QUALITY SYMBOLS	GENERAL TOLERANCES (UNLESS SPECIFIED)	SCALE 6:1	DESIGN UNITS METRIC	THIRD ANGLE PROJECTION	REVISE ON CAD ONLY
	∇ .0 ∇ .0	4 PLACES ± --- ± --- 3 PLACES ± --- ± .005 2 PLACES ± 0.13 ± .01 1 PLACE ± 0.25 ± --- ANGULAR ± 1 °	DIMENSION STYLE IN/MM DRAWN BY K.SIMONSON DATE 2004/10/09 CHECKED BY D.BRUSSELL DATE 2004/10/09 APPROVED BY D.BRUSSELL DATE 2004/10/09	TITLE	1X4 SFP GANGED CAGE ASSY, W/ 0.103 GASKET PRESS FIT, F/ LIGHT PIPE	
	DRAFT WHERE APPLICABLE MUST REMAIN WITHIN DIMENSIONS	MATERIAL NO. 747280415 DOCUMENT NO. SD-74728-415 SHEET NO. 2 OF 5	MOLEX INCORPORATED			
	THIS DRAWING CONTAINS INFORMATION THAT IS PROPRIETARY TO MOLEX INCORPORATED AND SHOULD NOT BE USED WITHOUT WRITTEN PERMISSION					

19 18 17 16 15 14 13 12 11 10 9 8 7 6 5 4 3 2 1

PCB LAYOUT FOR SINGLE SIDE MOUNTING



CROSS-HATCHED AREA DENOTES
COMPONENT AND TRACE KEEP-OUT
(EXCEPT CHASSIS GROUND)

SEE NOTE 3

SEE NOTE 3

SEE NOTE 3

$\varnothing .041 \pm .002$
 1.05 ± 0.05
[.004][A][B]

$\varnothing .037 \pm .002$
 0.95 ± 0.05
[.004][A][B]
SMALLER HOLE ON
THESE FOUR ROWS ONLY

THIS AREA DENOTES
COMPONENT KEEP-OUT
(TRACES ALLOWED)

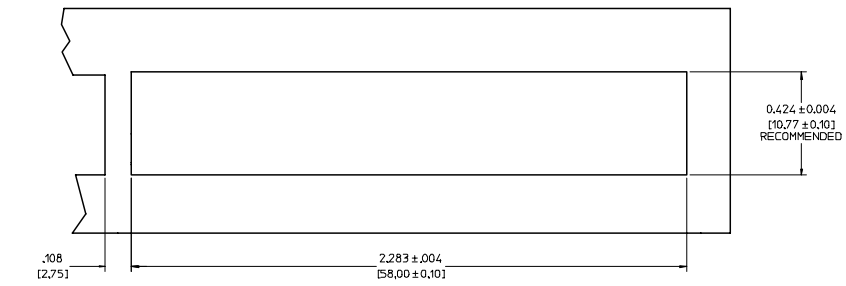
- NOTES:**
- PADS AND VIAS GO TO CHASSIS GROUND. (34 PLACES). RECOMMENDED PADS TO BE 2mm SQUARE
 - PLATING OPTIONAL FOR THROUGH HOLES. (12 PLACES).
 - RECOMMENDED PLATING INCLUDES HASL, IMMERSION (GOLD, SILVER, OR TIN), AND OSP.
 - HOLE PATTERN REPEATS FOR EACH PORT. SPACING BETWEEN PORTS IS 5.61 [14.25]

EC NO: USY2006-0225 DRW:K.SIMONSON06/01/24 CHK:D.BRUSSELL2006/01/24 APPR:R.BRUSSELL2006/01/25 REV:	QUALITY SYMBOLS	GENERAL TOLERANCES (UNLESS SPECIFIED)	SCALE 6:1	DESIGN UNITS METRIC	THIRD ANGLE PROJECTION	REVISE ON CAD ONLY
	$\nabla .0$ $\nabla .0$	4 PLACES ± --- ± --- 3 PLACES ± --- ± .005 2 PLACES ± 0.13 ± .01 1 PLACE ± 0.25 ± ---	DIMENSION STYLE IN/MM DRAWN BY K.SIMONSON DATE 2004/10/09 CHECKED BY BRUSSELL DATE 2004/10/09 APPROVED BY BRUSSELL DATE 2004/10/09	TITLE 1X4 SFP GANGED CAGE ASSY, W/ 0.103 GASKET PRESS FIT, F/ LIGHT PIPE MOLEX INCORPORATED MATERIAL NO. 747280415 DOCUMENT NO. SD-74728-415 SHEET NO. 3 OF 5		
		DRAFT WHERE APPLICABLE MUST REMAIN WITHIN DIMENSIONS	THIS DRAWING CONTAINS INFORMATION THAT IS PROPRIETARY TO MOLEX INCORPORATED AND SHOULD NOT BE USED WITHOUT WRITTEN PERMISSION			

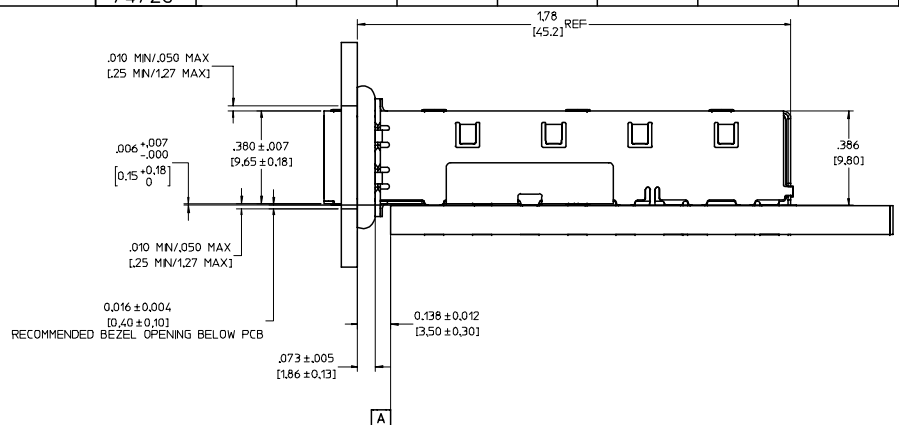
20 19 18 17 16 15 14 13 12 11 74728 9 8 7 6 5 4 3 2 1

L
K
J
I
H
G
F
E
D
C
B
A

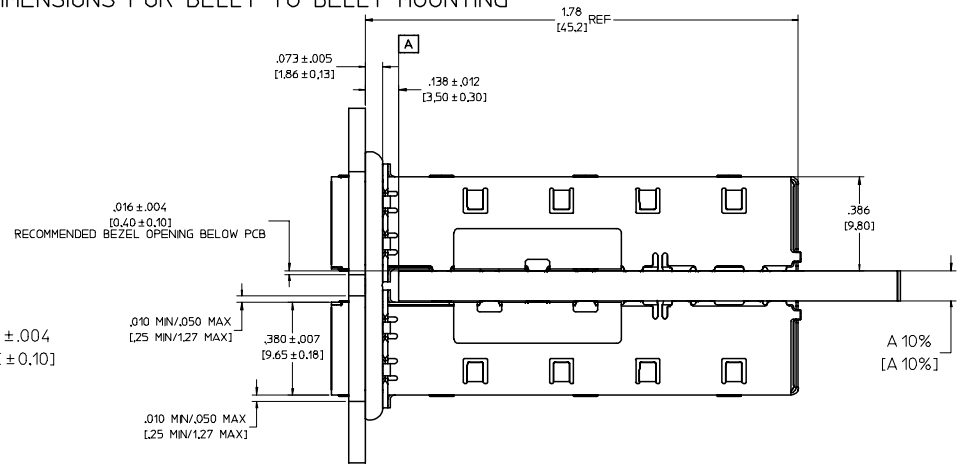
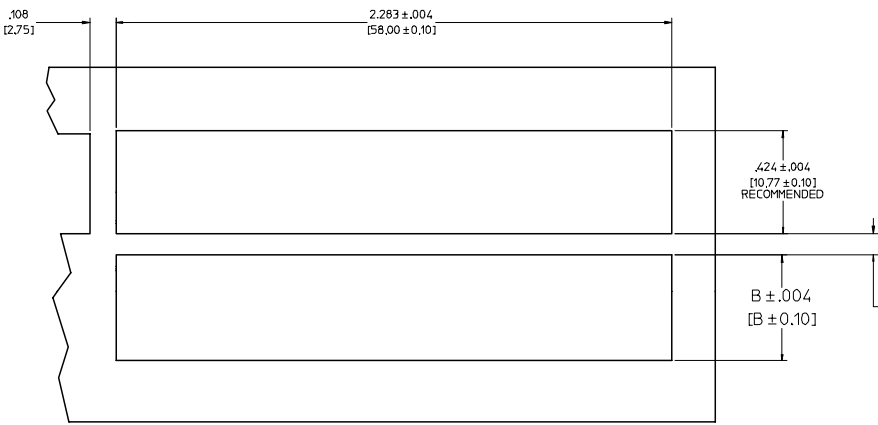
L
K
J
I
H
G
F
E
D
C
B
A



BEZEL AND BOARD POSITION DIMENSIONS FOR SINGLE SIDE MOUNTING



BEZEL AND BOARD POSITION DIMENSIONS FOR BELLY TO BELLY MOUNTING



NOTE: FOR A GIVEN BOARD THICKNESS (A), DIMENSIONS (B) AND (C) ARE DIRECTLY AFFECTED.

USE RECOMMENDED DIMENSIONS AND TOLERANCES TO AID IN DEVELOPING BEZEL OPENING.

FOR EXAMPLE USING A BOARD THICKNESS OF 0.125" THE RECOMMENDED VALUES WOULD BE:

A= .125/3.18 ± 10%
 B= .434/11.03 ± .004
 C= .088/2.23 ± .004

EC NO: USY2006-0225 DRW:KSIMONSO06/01/24 CHKD:BRUSSELL2006/01/24 APPR:BRUSSELL2006/01/25 REV DESCRIPTION	QUALITY SYMBOLS	GENERAL TOLERANCES (UNLESS SPECIFIED)	SCALE 4:1	DESIGN UNITS METRIC	THIRD ANGLE PROJECTION	REVISE ON CAD ONLY
	4 PLACES ± --- ± --- 3 PLACES ± --- ± .005 2 PLACES ± 0.13 ± .01 1 PLACE ± 0.25 ± ---	DIMENSION STYLE IN/MM DRAWN BY DATE KSIMONSO 2004/10/09 CHECKED BY DATE BRUSSELL 2004/10/09 APPROVED BY DATE BRUSSELL 2004/10/09	DIMENSION STYLE IN/MM TITLE 1X4 SFP GANGED CAGE ASSY, W/ 0.103 GASKET PRESS FIT, F/ LIGHT PIPE MOLEX INCORPORATED MATERIAL NO. 747280415 DOCUMENT NO. SD-74728-415 SHEET NO. 4 OF 5			
	DRAFT WHERE APPLICABLE MUST REMAIN WITHIN DIMENSIONS	THIS DRAWING CONTAINS INFORMATION THAT IS PROPRIETARY TO MOLEX INCORPORATED AND SHOULD NOT BE USED WITHOUT WRITTEN PERMISSION				

19 18 17 16 15 14 13 12 11 10 9 8 7 6 5 4 3 2 1

20 | 19 | 18 | 17 | 16 | 15 | 14 | 13 | 12 | 11 | 74728 | 9 | 8 | 7 | 6 | 5 | 4 | 3 | 2 | 1

DATE	REV	CHANGES	COMMENTS
2004/08/17	1	PRELIMINARY DOCUMENT	N/A
2004/10/09	A	INITIAL RELEASE	N/A
2006/01/20	B	ADD PCB AND BEZEL LAYOUTS. UPDATED NOTES.	DOCUMENT CHANGE ONLY

EC NO: USY2006-0225 DRW:KSIMONSO06/01/24 CHK:D.BRUSSELL2006/01/24 APPR:BRUSSELL2006/01/25	QUALITY SYMBOLS	GENERAL TOLERANCES (UNLESS SPECIFIED)	SCALE 1:1	DESIGN UNITS METRIC	THIRD ANGLE PROJECTION	REVISE ON CAD ONLY																											
	▼ .0 ∇ .0	<table border="1"> <thead> <tr> <th></th> <th>mm</th> <th>INCH</th> </tr> </thead> <tbody> <tr> <td>4 PLACES</td> <td>± .005</td> <td>± .0005</td> </tr> <tr> <td>3 PLACES</td> <td>± .01</td> <td>± .001</td> </tr> <tr> <td>2 PLACES</td> <td>± .025</td> <td>± .0025</td> </tr> <tr> <td>1 PLACE</td> <td>± .05</td> <td>± .005</td> </tr> </tbody> </table>		mm	INCH	4 PLACES	± .005	± .0005	3 PLACES	± .01	± .001	2 PLACES	± .025	± .0025	1 PLACE	± .05	± .005	<table border="1"> <thead> <tr> <th colspan="2">DIMENSION STYLE</th> </tr> </thead> <tbody> <tr> <td>DRAWN BY</td> <td>DATE</td> </tr> <tr> <td>KSIMONSO</td> <td>2004/10/09</td> </tr> <tr> <td>CHECKED BY</td> <td>DATE</td> </tr> <tr> <td>BRUSSELL</td> <td>2004/10/09</td> </tr> <tr> <td>APPROVED BY</td> <td>DATE</td> </tr> <tr> <td>BRUSSELL</td> <td>2004/10/09</td> </tr> </tbody> </table>	DIMENSION STYLE		DRAWN BY	DATE	KSIMONSO	2004/10/09	CHECKED BY	DATE	BRUSSELL	2004/10/09	APPROVED BY	DATE	BRUSSELL	2004/10/09	DIMENSION STYLE IN/MM TITLE 1X4 SFP GANGED CAGE ASSY, W/ 0.103 GASKET PRESS FIT, F/ LIGHT PIPE MOLEX INCORPORATED
			mm	INCH																													
	4 PLACES	± .005	± .0005																														
3 PLACES	± .01	± .001																															
2 PLACES	± .025	± .0025																															
1 PLACE	± .05	± .005																															
DIMENSION STYLE																																	
DRAWN BY	DATE																																
KSIMONSO	2004/10/09																																
CHECKED BY	DATE																																
BRUSSELL	2004/10/09																																
APPROVED BY	DATE																																
BRUSSELL	2004/10/09																																
DRAFT WHERE APPLICABLE MUST REMAIN WITHIN DIMENSIONS	MATERIAL NO. 747280415 DOCUMENT NO. SD-74728-415 SHEET NO. 5 OF 5	THIS DRAWING CONTAINS INFORMATION THAT IS PROPRIETARY TO MOLEX INCORPORATED AND SHOULD NOT BE USED WITHOUT WRITTEN PERMISSION																															
B REV																																	

19 | 18 | 17 | 16 | 15 | 14 | 13 | 12 | 11 | 10 | 9 | 8 | 7 | 6 | 5 | 4 | 3 | 2 | 1