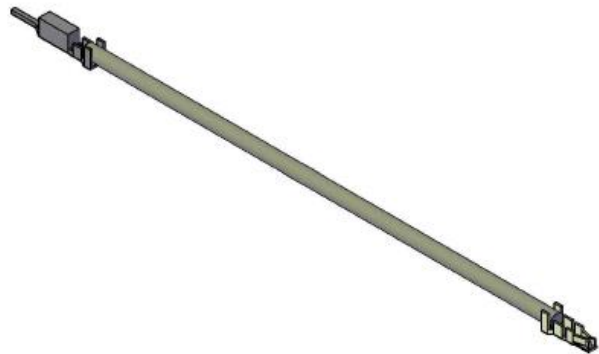
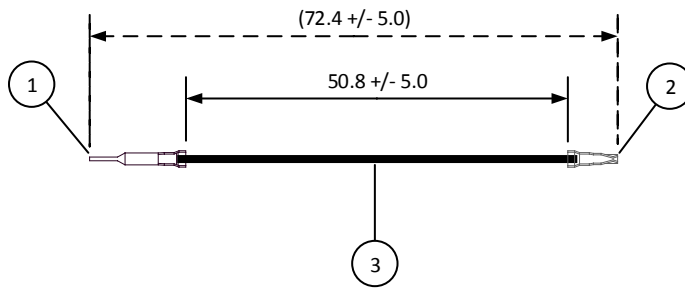


4		3		2		1	
ITEM	CONNECTOR PART NO.	DESCRIPTION	IPI CHECK	EOR CHECK	Applicable Tooling		
1	SXAM-01T-P0.6	XA CONNECTOR MALE CONTACT			APPLICATOR		
2	SXA-01T-P0.6	XA CONNECTOR FEMALE CONTACT			Applicable Housings		
3	UL1007, 22 AWG	BLACK					

NO. OF CIRCUITS	HOUSING PART NO. FOR SXA CONTACT	HOUSING PART NO. WITH PANEL LOCKS FOR SXAM CONTACT	HOUSING PART NO. WITHOUT PANEL LOCKS FOR SXAM CONTACT
2	XAP-02V-1	XARR-02V	XARR-02VF
3	XAP-03V-1	XARR-03V	XARR-03VF
4	XAP-04V-1	XARR-04V	XARR-04VF
5	XAP-05V-1	XARR-05V	XARR-05VF
6	XAP-06V-1	XARR-06V	XARR-06VF
7	XAP-07V-1	XARR-07V	-
8	XAP-08V-1	XARR-08V	XARR-08VF
9	XAP-09V-1	XARR-09V	XARR-09VF
10	XAP-10V-1	XARR-10V	XARR-10VF
11	XAP-11V-1	XARR-11V	-
12	XAP-12V-1	XARR-12V	XARR-12VF
13	XAP-13V-1	XARR-13V	-
14	XAP-14V-1	XARR-14V	-
15	XAP-15V-1	XARR-15V	-



JST

SCALE 1:1	CUSTOMER NAME	CUSTOMER PART NO.
DIMENSIONS All dimensions are in MM with a tolerance of +/- 3.0 unless otherwise specified.	DESCRIPTION 2.5 mm Pitch XA to XA Series Standard Leads - 2" Inside Length DOUBLE-END LEADS, M-F	
DRAWN BY STEVEN PILKINGTON	ASSEMBLY PART NO. ASXAMSXA22K51	
CHECKED BY JUSTIN BAKER	DRAWING NO. & REVISION GAM-076	REVISED 3/9/2016

REV.	DESCRIPTION	DATE	BY
------	-------------	------	----

4

3

2

1